



www.asianda.cn

Shenzhen Yaxunda Lcd Display Equipment Co.,Ltd

info@asianda.cn

0086-755-27865713

2/F, Langtian Building, Chuangye Road, No.72 Zone,

Bao'an District Shenzhen P.R.C

2010-2020

Innovative Commercial

LCD Solutions

A New Light to Digital Signage

Inavate

**Integrated
Systems
Europe**

DSE
DIGITAL SIGNAGE EUROPE



Asianda®

COMPANY PRODUCT CATALOG



(01-04)

Hand Sanitizer Digital Display

- Bottle Volume: 3000 ml
- Screen Size: 21.5 inch
- Touch Screen : Optional
- Dispenser life time: 500,000 times
- Auto Sensor: IR
- Installation: Wall mount / Floor standing
- Cloud Service: yes



(05-08)

Face Recognition Temperature

- 8 inch IPS full-view HD LCD display
- Industrial-grade appearance
- Support mask recognition detection
- CE & FCC Qualified
- CMS(Face recognition and EFace)
- Touch screen and standby advertising support



(09-12)

Outdoor Digital Signage

- Brightness: 3000cd/m2 (2000cd/m2 & 2500cd/M² option)
- 7*24 hours: Yes
- Resolution: 1920x1080/3840x2160
- Cooling system: Air Condition (Fans option)
- Waterproof: Yes
- Dustproof: Yes



(13-16)

Digital Signage Series

- Resolution: 1920 x 1080/3840*2160
- Brightness :400nits
- Contrast :4000:1
- Touch:10 points capacitive touch



(17-20)

Touch Screen Kiosk

- Resolution: 1920*1080/3840*2160
- Touch: 10 points G+G Capacitive Touch
- Viewing angle: 178 °
- Brightness:450nits
- Color :16.7M



(21-24)

LCD Video Wall

- Screen scale: 16:9
- Resolution: 1920 * 1080/3840*2160
- Contrast: 4000:1/1400:1
- Brightness: 500/700cd / m²
- Response time: 8ms
- Visual angle: horizontal / vertical 178 °
- Backlight: LED backlight



(25-28)

Digital Window Display

- Resolution:1920x1080
- Brightness: 3000nits
- Contrast: 3000:1
- Response time: 6ms
- Viewing Angel: 178/178
- Chip solution:RK3288
- Android system version: 6.0
- RAM/ROM: 2G+8G



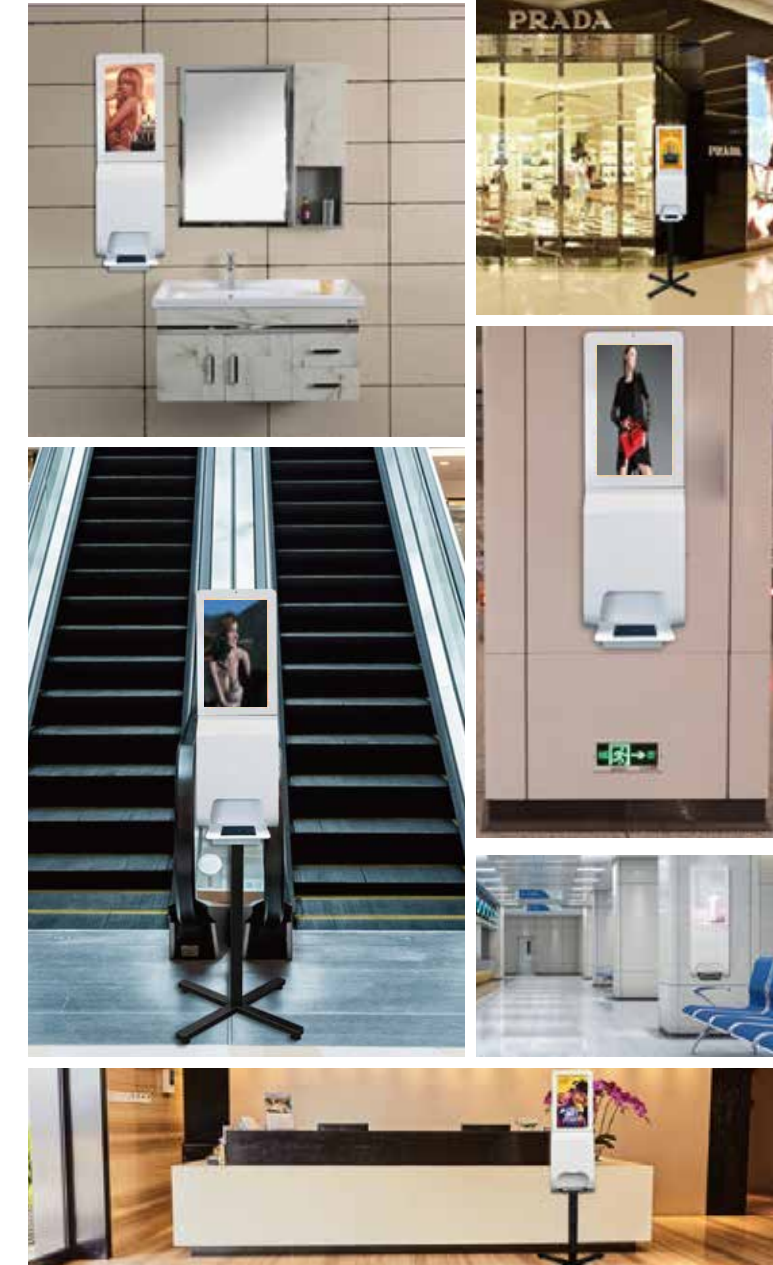
(29-32)

Super Narrow Commercial Display

- Brightness: 400/450cd / m²
- Screen scale: 16:9
- Resolution: 1920x1080/3840x2160
- Contrast: 5000:1
- Response time: 6ms
- Visual angle: horizontal 178 ° / vertical 178
- Backlight: LED backlight

Hand Sanitizer Digital Display

- Optional Materials (Metal And Plastic)
- Voice Speaker
- Front Door Open For Easy Maintenance
- Multiple Interface Options
- Liquid Level Detection
- Wireless Internet Access Built-in WIFI
- Temperature Measurement (Optional)
- Full HD
- High Temperature Automatic Alarm(Optional)
- Multi-scenario Application



Practical Application

The product is suitable for office buildings, companies, hotels, shopping malls.

YXD22L-AD2,engineers can achieve 90% monitoring and management in the office checking the water level on line, save manpower and the cost to check on site. support long-distance online publishing, monitor current broadcast programs, manage multiple devices etc. Cloud XDS CMS , the advertising display can be much more flexible, video , music, pictures any kind of the contents display at your own idea by any time and any where.

YXD22L-AD3,Built in the smart sensor to make the wireless control and monitoring on the remaining liquid in the Bottle. CE & FCC Qualified.with the new useful function-thermometer voice speaker,easy to help the people to protect them from some high temperature people.with the revolutionary design, super slim frame with ABS plastic material,the new design on the hand sanitizer digital display can be more attractive on the outline.



Interface switch



Bottle of hand sanitizer



Back



Power Cable

Annotation: Detailed parameters are on page 33

YXD22L-AD2

21.5 Inch Auto Hand Sanitizer Dispenser Digital Display YXD22L-AD2

1. Interface Ports Put On Top Side, Clients Can Easy Plug Sd Card Or Usb Disk, Lan Etc
2. Tempered Glass To Protect The Screen
3. Separate Front Door, Make The Refill Is Easier.
4. 3000ml Big Bottle Volume, Save The Time To Refill
5. Hide Lock On Side, Make The Front Side More Beautiful
6. Water Level Detection, Engineers Can Check In Our CMS Wirelessly
7. Online Cloud CMS, Provide The Long Distance Control And Change Advertising In Different Places.
8. CE & FCC ,RoHS Qualified



YXD22L-AD3

Hand Sanitizer Dispenser Smart Display YXD22L-AD3

1. Interface Ports Put On Top Side, Clients Can Easy Plug Sd Card Or Usb Disk, Lan Etc
2. The 3rd Generation Design
3. Separate Front Door, Make The Refill Is Easier.
4. 3000ml Big Bottle Volume, Save The Time To Refill
5. Slim Design with ABS (plastic)
6. Water Level Detection, Engineers Can Check In Our CMS Wirelessly
7. Online Cloud CMS, Provide The Long Distance Control And Change Advertising In Different Places.
8. Thermometer Voice Speaker
9. CE & FCC ,RoHS Qualified



Face Recognition Temperature

- LCD Display
- Voice Broadcast
- IPS Full View
- Multiple Interface Options
- Face Recognition
- Standby Advertising Function Optional
- Touch Function Optional
- Multiple Installation Methods
- Infrared Induction Temperature Measurement
- Background Operations
- Multiple Applications
- Android System



Annotation: Detailed parameters are on page 34

Practical Application

Eface, the New Generation for the Face Recognition Temperature Measurement can be more intelligent to help people to detect the temperature and the face recognition. Easy to install, and check the Data on the Eface, both available on the local Lan and the Cloud connection.

YXD-F8, Face-recognition-temperature-measurement-terminal adopts deep learning algorithm, achieving high recognition speed and accuracy. YXD-F8 intergrated with 2 million pixels 30,000 face database. Face recognition pass speed is less than 1 second. Supports accurate face recognition and comparison while wearing a mask.

YXD-F8-A is intergrated with the CMS function, based on the Eface software, the new generation of the face recognition temperature measurement, YXD-F8-A can display its own advertising material, like the video, and the any pictures while the device is on the stand by situation. YXD-F8-A will immediately start to working on the temperature detecting and the face recognition once the camera detect any human faces pass by.



YXD-F8

Face Recognition Temperature Measurement Terminal-8 Inch

1. 8 inch IPS full-view HD LCD display, no streaking and delay
2. Industrial-grade appearance, IP65, certain outdoor dustproof and waterproof functions
3. Support mask recognition detection, automatic recognition and voice reminder for non-wearing masks
4. It will be good for desk top, wall mount and the floor standing flexible installation methods.
5. 30,000 face database . Face recognition pass speed is less than 1 second.
6. Face Recognition Thermometer Application on the School and the College Reopen
7. CE & FCC Qualified



YXD-F8-A

Eface Temperature Measurement Terminal Touch Screen-8 Inch

1. 8 Inch Touch Screen
2. 2 Mega infrared Camera x 2
3. CMS (Face recognition and EFace)
4. Support Linux system
5. Accurate temperature measurement
6. Rapid Passage for the gate access system
7. Data Upload wirelessly
8. Multi Way Installation
9. Voice Broadcast Temperature.



Outdoor Digital Signage

- 7*24 Hours
- Smart Cooling System
- IP55 Waterproof And Dustproof
- Remote Management System
- Multiple Protections
- Auto Brightness Adjustment
- Touch Screen Optional
- Support Multiple File Formats
- Resolution 3840*2160
- Multiple Scenes Available

Practical Application

Multiple choices:
capacitive touch screen
dual screens
single screen + poster stand or fixed on wall
air condition or fan cooling system

Brightness adjustable:
let the screen display adjust based on different time of day and night, which can provide the best experience to the viewer.
it also allows to extends the life of screen and save energy costs, lower heat output.

Long remote content management system:
engineers can achieve 90% monitoring and management in the office
support long-distance online publishing, monitor current broadcast programs, manage multiple devices etc



Annotation: Detailed parameters are on page 35

Outdoor Portrait

Outdoor Floor Standing Digital Signage

1. Brightness: 3000cd/M2(2000cd/M2 & 2500cd/M² Option)
2. Double Screen: (Optional)
3. 7*24 Hours: Yes
4. Resolution: 3840x2160/1920x1080
5. Cooling System: Air Condition (Fans Option)
6. Waterproof: Yes
7. Dustproof: Yes
8. IP55: Yes

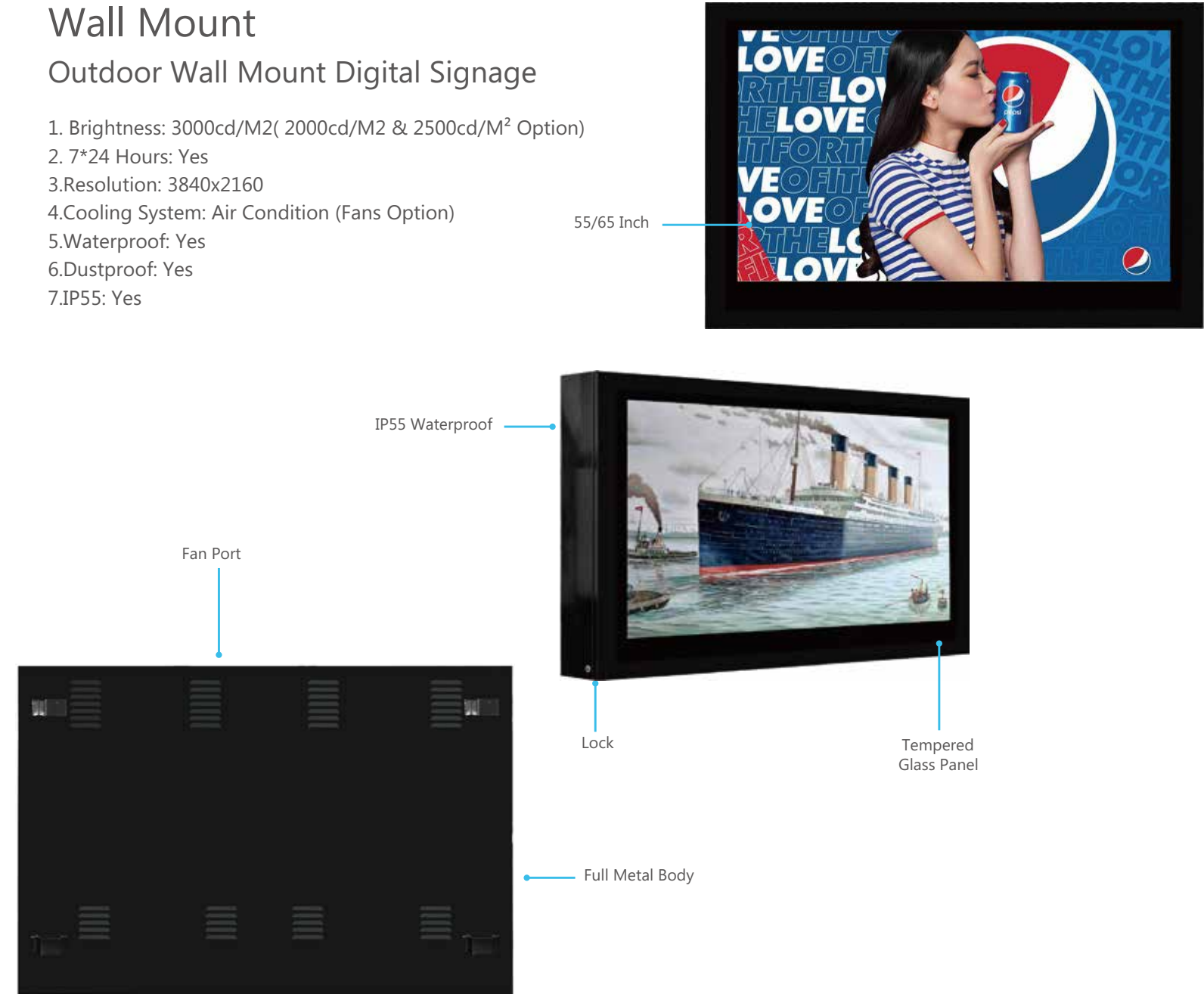


Air Condition Back Side

Wall Mount

Outdoor Wall Mount Digital Signage

1. Brightness: 3000cd/M2(2000cd/M2 & 2500cd/M² Option)
2. 7*24 Hours: Yes
3. Resolution: 3840x2160
4. Cooling System: Air Condition (Fans Option)
5. Waterproof: Yes
6. Dustproof: Yes
7. IP55: Yes



Digital Signage Series

- HD resolution 3840*2160
- Long Life 50000 Hours
- Capacitive Touch Screen (Optional)
- Multiple Data Interfaces
- 7*24 Hours
- Low Noise
- Multi-application
- Metal Shell
- Android, Windows (Optional)
- Wireless Connections
- Voice Broadcast
- Support Customization

Practical Application

Place In Clothes Store To Show Your Newest Clothes Model,Catch Attention Of Clients,Help You Get More Orders.Install Software On Computer,Connect Screen Through Wifi Or Lan Cable, Advertising Program,Then You Can Contents You Need.

FHD 1080p Resolution,Can Display Contents(Pics,Videos,Date,File) On The Kiosk Which You Want To Show To Your Target Customers.Can Help You To Expand Your Business,And Capture Larger Market Share.

24/7 Continuously Display,Industrial Grade Product To Perfectly To Show Your Products On Screen Through Pics,Videos Etc43inch 49inch 55inch Available.You Can Choose The Suitable Size According To Your Site.

Up to 55inch wall mount digital signage,32inch 43inch 49inch 55inch available;

FHD 1080p resolution,android 5.1 system and windows 10 system optional,Capacitive 10 points touch.with CMS,can display contents(pics,videos,date,file) on the kiosk which you want to show to your target customers.can help you to expand your business,and capture larger market share.



Annotation: Detailed parameters are on page 36

Digital Signage Series

Indoor Android Floor Standing Lcd Digital Signage

1. Brightness :400nits
2. Contrast :4000:1
3. 7*24 Hours: Yes
4. Resolution: 3840x2160/1920x1080
5. Touch:10 points capacitive touch
6. android 7.1 system and windows 10 system optional
7. 43/49/55/65/75/86 inch optional



Publish Content Remotely

Touch Optional

Metal Edging



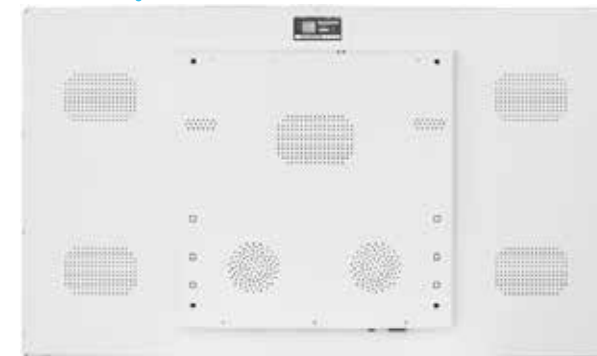
Digital Signage Series

Wall Mount Android Indoor Lcd Digital Signage

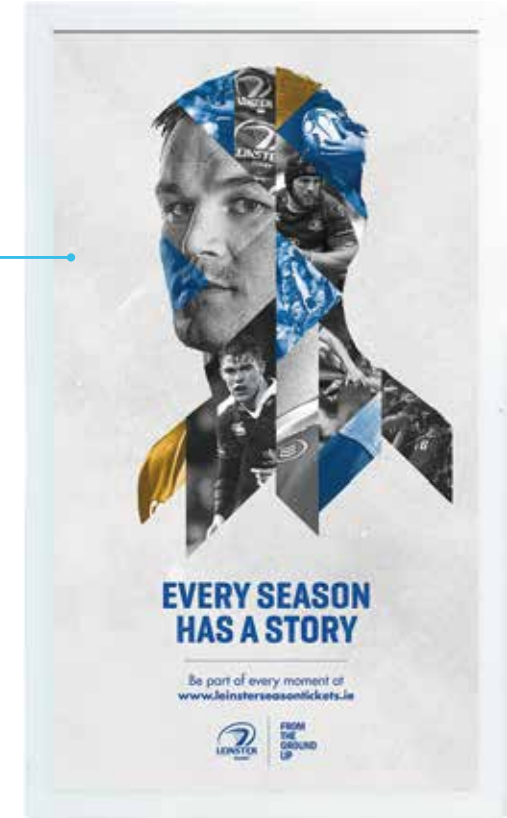
1. Brightness :400nits
2. Contrast :4000:1
3. 7*24 Hours: Yes
4. Resolution: 1920 X 1080
5. Touch:10 Points Capacitive Touch
6. Android 7.1 System And Windows 10 System Optional

Support Remote Or Local Control

Various high definition signal interface



FHD 1080p Resolution



Touch Screen Kiosk

- HD 1080p Video
- Support Picture Playback
- Support Flash Player
- Multi-touch Function
- Support Txt File Format
- Built-in WIFI Module
- Multiple Data Interfaces
- 178° Super Wide Angle
- Multiple Application Scenarios
- 7*24 Hours Uninterrupted Playback
- LED Backlight
- Android System



Practical Application

32inch LCD interactive kiosk with integrated way-finding software. The map of the shopping mall can be indicated, which is helpful for the clients to find the stores they want to go. touch screen interactive kiosk with QR scanner, 58mm thermal printer and the position for POS. The clients can purchase and pay for the goods on-line. Widely used in the self-services super markets. interactive kiosk with 58mm thermal printer and the position for POS. Installing the POS and the integrated related software, then the clients can buy and print the movie tickets.

The kiosk not only uses surface acoustic wave screen, but also has the advantages of anti-scratch, less reflection, faster sliding screen and long life. On the other hand, the streamlined appearance also has a good affinity and atmosphere of the times. The webpage file content of kiosk can be shared through the local area network to complete self-service printing. In addition to printers, optional devices such as POS machines, cameras, QR code scanner, ID card scanner etc. can be added. It is gradually used in all aspects of people's life, study and work. It has been widely used due to its high cost performance, customer design, and strong environmental adaptability.



OPS Computer



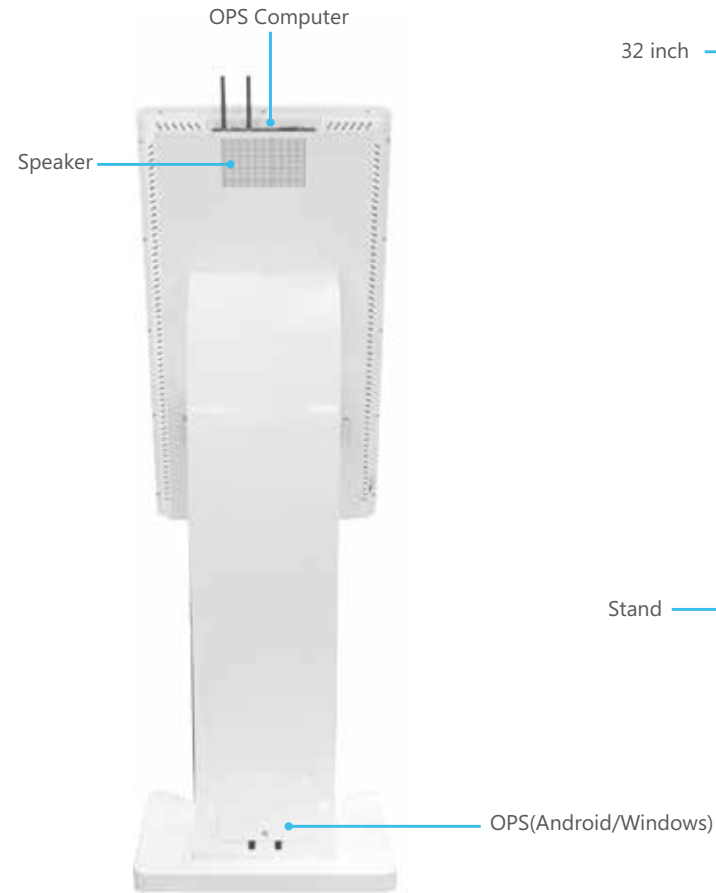
Detail

Annotation: Detailed parameters are on page 37

YXD32P-AWT

Customized 32inch LCD Touch Screen Interactive Kiosk

- 1.Size: 32inch
- 2.Resolution: 1920*1080
- 3.Active Area:698×392
- 4.Touch: 10 points G+G Capacitive Touch
- 5.Functions: 1080p 2 mega-pixels camera, 58mm thermal printer, QR Scanner or Position for POS



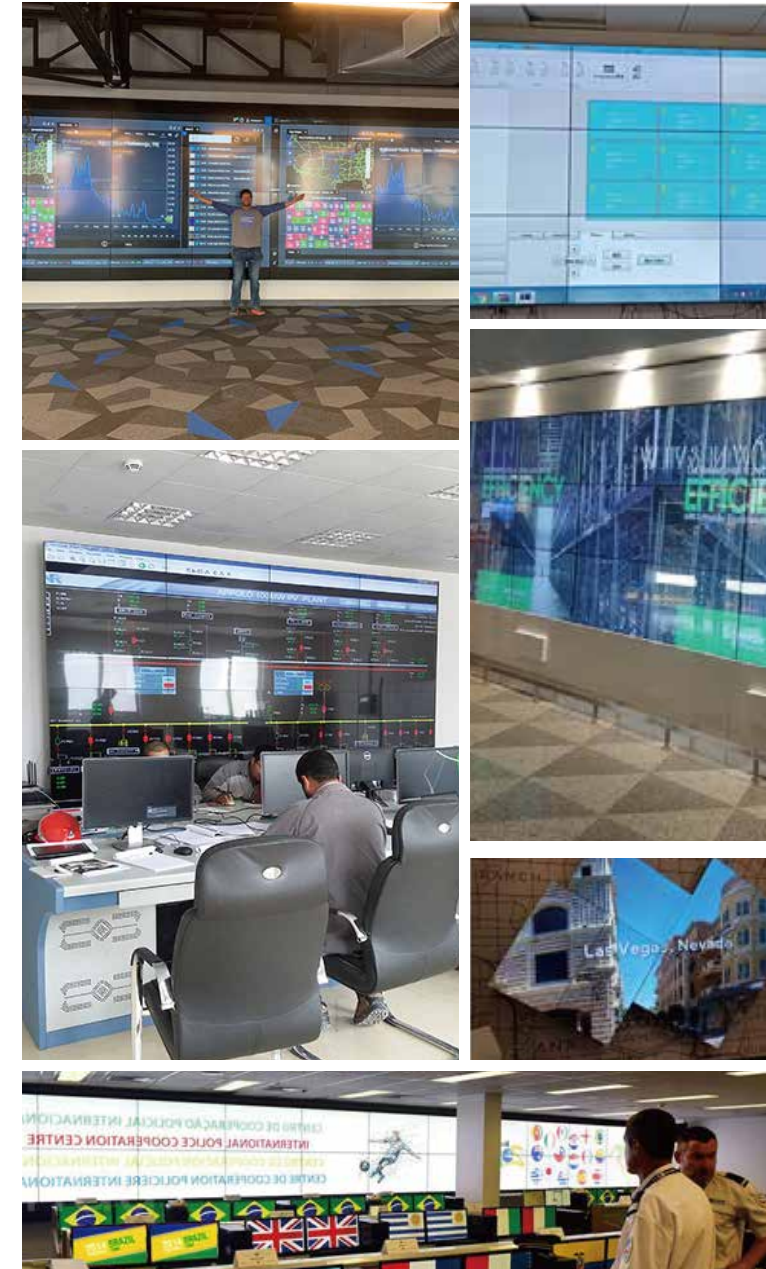
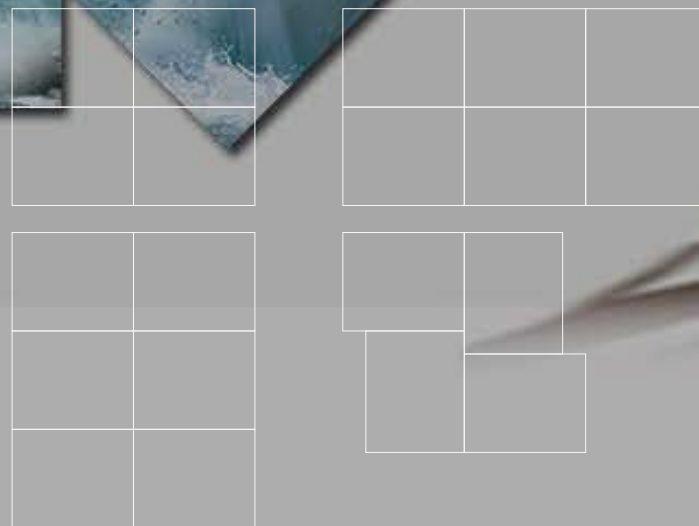
Touch Screen Kiosk 4k Floor Standing Indoor Smart Touch Kiosk

- 1.Touch : IR touch /Capacitive touch
- 2.Brightness:450nits
- 3.Resolution :2160*3840
- 4.Viewing angle: 178 °
- 5.Contrast ratio : 2000:1
- 6.Backlight life : 5000hours
- 7.Color :16.7M
- 8.Input Voltage : 100V-240V<50/60HZ>



LCD Video Wall

- Ultra-narrow Bezel
- 4K 4K/FHD Optional
- 178° 178° Super Wide Angle
- LED LED Backlight
- High Brightness
- Multiple Installation Methods
- Multiple Data Interfaces
- Shaped Stitching
- The Screen Displays Rich Colors
- Free Splicing Screen



Annotation: Detailed parameters are on page 24

Practical Application

Use intelligent control software to control and configure multiple LCD displays through an RS232 or RJ45 connection (Regardless of the monitor's location) to make the screen easier to set up and the status of all networked displays.

Through the display's built-in splicing function, it is able to support for a maximum of 15 x 15 total 225 screens to display the complete picture perfectly and without external connection of the processor management equipment.

The DID LCD screen has a contrast ration of 3000:1, which is more than twice as high as a conventional PC or TV LCD screen.super wide viewing angle of 178° vertically and horizontally.



Processor



Hydraulic Support



Matrix

LCD Video Wall

Indoor Wall Mounted Super Narrow Display

- 1.Screen scale: 16:9
- 2.Resolution: 3840 * 2160/1920*1080
- 3.Contrast: 4000:1/1400:1
- 4.Brightness: 500/700cd / m²
- 5.Response time: 8ms
- 6.Visual angle: horizontal / vertical: 178 °
- 7.Backlight: LED backlight

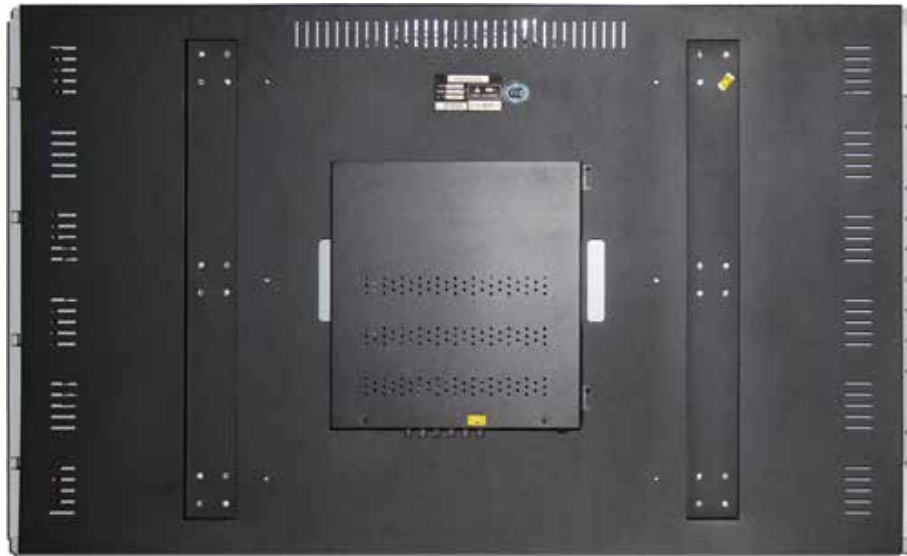


Environmental Health

High Resolution

High Brightness

Protect The Eyes



Flicker-free

LCD Video Wall

Panel	Display Size	46 inch	49 inch	55 inch	65 inch
	Resolution	1920*1080			3840*2160
	Bezel	1.7mm/3.5mm	3.5mm	0.88mm/1.8mm/3.5mm	3.5mm
	Active area(HxW mm)	1018.08x572.67	1074x604.2	1209.6x680.4	1428.48x803.52
	Aspect Ratio	16:9			
	Brightness(cd/m ²)	500/700			
	Colour	16.7M			
	Viewing Angle	178°			
	Contrast Ratio	1400:1/4000:1			
	Backlight Life	50000hours			
AV inputs/ outputs	Video	HDMI 1.4 IN,HDMI 2.0 IN,Displayport input,DVI IN,VGA IN,Displayport output			
	Audio	Audio in,Audio out			
	Communication	RS232 input,RS232 output			
Power	Power Consumpt	150w	155w	160w	240w
	Input Voltage	100V~240V(50/60Hz)			
Mechanical	Unit size(LxWxh mm)	1024x578x123	1077x607x115	1213x684x123	1432.58x807.62x119.3
	Net weight(kg)	20.7	22.05	28	30
	Gross weight(kg)	26	28.5	33	38
Environ-mental	Working Temperature	0-50°			
	Operating Humidity	10-90%			
	Working Pressure	800-1114 hpa(Altitude:0-2000m)			
Access-ories	Included	Remote control,AC Power Cable,User Manual,VGA/HDMI Cable			

Digital Window Display

- High Brightness
- Control The Time Of Using The Machine
- 7*24 Hours
- HD Full HD
- They Can Be Used Horizontally Or Vertically
- Android System
- Multiple Data Interfaces
- TFT TFT Screen



Annotation: Detailed parameters are on page 28

Practical Application

Our cases of this high brightness display, help doing promotion and activities of our display, shopping mall is the best place to install our display.

This allows for reduced power usage by automatically powering off in hours that the displays are not required. you can set daily on/off times for your displays.

Built with commercial grade panel and components these displays are designed to run 24/7 in constantly use; unlike normal screens. the panel also has a over 50000 hours of continuous use. they can also be used in landscape or portrait orientation.

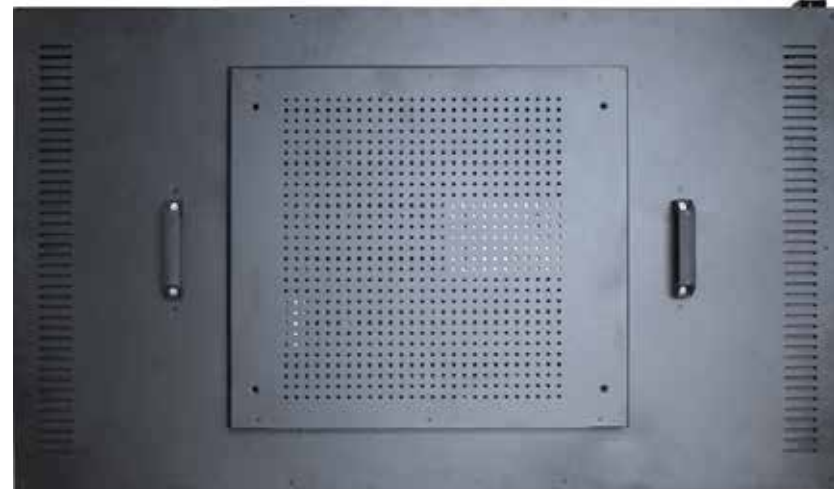
Design for application in direct sunlight such as window displays, we use a special ultra-high brightness panel to making this the number one choice for digital signage in window displays.

What we concern is provide the high brightness with lower power consumption.

Digital Window Display

Digital Window Display with 3000nits High Brightness

- 1.Resolution:1920x1080
- 2.Brightness: 3000nits
- 3.Contrast: 3000:1
- 4.Response time: 6ms
- 5.Viewing Angel: 178/178
- 6.Chip solution:RK3288
- 7.Android system version: 6.0
- 8.RAM/ROM: 2G+8G



They Can Be Used Horizontally Or Vertically

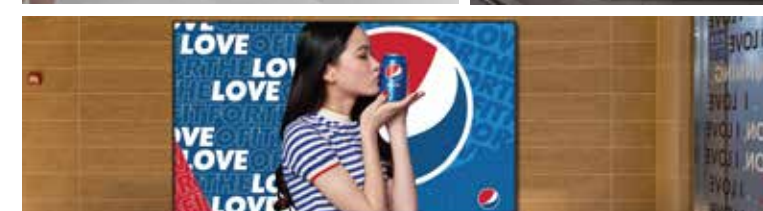
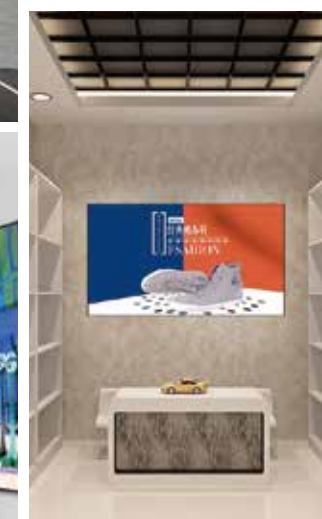
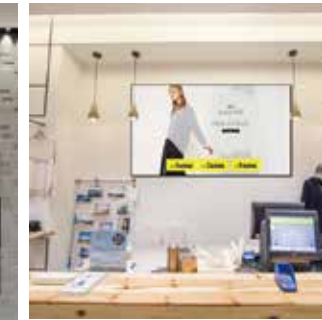
Backlight Life 50000hours

Digital Window Display

Panel	Display Size	43 inch	49 inch	55 inch	65 inch
	Resolution	1920*1080			
Active area(HxW mm)	940x529	1073x604	1210x680	1428x803	
Aspect Ratio	16:9				
Brightness(cd/m ²)	3000				
Colour	16.7M				
Viewing Angle	178°				
Contrast Ratio	3000:1				
Backlight Life	50000hours				
AV inputs/ outputs	Video	Inputs DPx1, HDMIx2, DVix1, VGAx1, Audiox1, RS232x1 Outputs Audiox1, RS232x1, DPx1, IRx1			
	Communication	RK3288 (2G + 8G)			
Power	Power Consumpt	320w	360w	410w	450w
	Input Voltage	100V~240V(50/60Hz)			
Mechanical	Unit size(LxWxh mm)	965x553x50	1093x621x50	1232x703x50	1455x831x50
	Net weight(kg)	20	26	30	35
	Gross weight(kg)	26	32	36	42
Environ-mental	Working Temperature	0-45°			
	Operating Humidity	5-90%			
Accessories	Included	Remote control , AC power cable , User manual , Warranty card , Certificate of conformity			

Super Narrow Commercial Display

- 7*24 Hours
- They Can Be Used Horizontally Or Vertically
- Multiple Data Interfaces
- FHD 8mm Wall Mount Edge Ultra-Narrow Display
- Full HD
- LED Backlight
- TFT Screen
- Android/Windows System Optional



Practical Application

Metal shell Cover

Anti-radiation, anti-magnetic field, anti-electric field interference ,it can be used normally in harsh environments.It can be operated in temperature range from 0 ° C to + 45 ° c and in humidity range from 5% to 90%.

Clear HD Picture Quality

High definition, high brightness and high color gamut,IPS panel , professional Industrial LCD screen,FHD quality picture , Multi-angle display .It integrates computer technology, Internet , audio , multimedia , industrial plastic arts as a whole.The video image is clearer, more natural and delicate, and the visual impact is stronger.

Wide applicability

Rich interface, can receive HDMI, VGA, DVI, etc., support multiple control methods, can be applied to a variety of places for comercial use , such as shopping mall , cinema ,restuarant ,etc ,for displays ads.

Annotation: Detailed parameters are on page 32

Super Narrow Commercial Display

FHD Wall Mounted Indoor Super Narrow Display

1. Brightness: 400/450cd / m²
2. Screen scale: 16:9
3. Resolution: 1920x1080/3840x2160,
4. narrow bezel : 8mm
5. Response time: 6ms
6. Visual angle: horizontal 178 °/ vertical 178
7. Backlight: LED backlight
8. Support plus Android OS



IPS Panel

Wall-mounted Standard Installation

Industrial-grade Narrow-edge Design



Metal Shell Cover

Rich Interface

Digital Window Display

Panel	Display Size	32 inch	43 inch	49 inch	55 inch	65 inch
	Resolution	1920*1080			3840*2160	
	Active area(HxW mm)	698 × 392	940×529	1073x604	1210x680	1428x803
	Aspect Ratio	16:9				
	Brightness(cd/m ²)	400/450				
	Colour	16.7M				
	Viewing Angle	178°				
	Contrast Ratio	5000:1				
	Backlight Life	50000hours				
AV inputs/ outputs	Video	Inputs DPx1, HDMIx2, DVIx1, VGAx1, Audiox1, RS232x1 Outputs Audiox1, RS232x1, DPx1, IRx1				
	Communication	RK3288 (2G + 8G)				
Power	Power Consumpt	80w	100w	120w	140w	150w
	Input Voltage	100V~240V(60Hz)				
Mechanical	Unit size(LxWxh mm)	725*415*60	955*545*62	1086*617*62	1222*694*62	1441*817*89
	Net weight(kg)	19.75	30.45	38.15	46.85	78.7
	Gross weight(kg)	26	38	45	55	86
Environ-mental	Working Temperature	0-45°				
	Operating Humidity	5-90%				
Accessories	Included	Remote control , AC power cable , User manual , Warranty card , Certificate of conformity				

Hand Sanitizer Digital Display

LCD Size	21.5inch IPS	Material	IBS (Plastic)	Hardware Bright Painting(Iron)
Resolution	1920*1080	Standard Color	White (other color based on the 500 pcs MOQ)	
Display Ratio	16:9	Product Size	365mm*80mm*1053mm	370mm*58.5mm*1138mm
Brightness (nits)	350 cd/m2	Net Weight	8kg	18.5kg
Contrast	1400:1	Package	Carton + Wooden case (size:113*28*58cm, weight: 13.56kg)	
Area	476.64(H) × 268.11(V) mm	Stand	Iron, Weight :8 kg (optional)	Iron, Weight :6.41 kg (optional)
View Angle	178/178/178/178	Internet	LAN-RJ45 /WIFI/3G/4G (optional)	
Response Time	6ms	Input	AC 100-240V	
Life (hrs)	50000	Auto Dispenser		
Operate System	Android 7.1	Dispensing life	500000 times	
CPU	RK3288 (RK3399 optional)	Bottle Volume	3000 ml	
RAM	2GB	Dispense Volume	Foam-0.4ml, Gel-1ml, Liquid-1ml / Time	
ROM	8GB/16GB	Pump	Standard pump for Liquid soap, Gel or Foam	
Touch Screen	Optional (G+G)	Certificates	CE ,FCC & RoHS	

Face Recognition Temperature

		YXD-F8	YXD-F8-A
Camera	Resolution	2 million pixels	2 million pixels
	Type	Binocular wide dynamic camera	Binocular wide dynamic camera
	Aperture	F2.4	F2.4
	Focusing distance	50-150cm	30-80cm
	White balance	auto	auto
	Photo flood light	LED and IR dual photo flood light	LED and IR dual photo flood light
Screen	Size	8.0 inch IPS LCD screen	8.0 inch IPS LCD screen
	Resolution	800×1280	800×1280
	Touch	Not supported (optional support)	optional support
Processor	CPU	RK3288 Quad core,RAM 2G The maximum main frequency is 1.8 GHz.	High-performance 32-bit 4-core ARM chip
	Storage	EMMC 8G	EMMC 8G
Dimensions	Size	238.24*128*21.48(mm)	284 * 140 * 29 (mm)
Equipment Interface	Interfaces	USB Interfaces 1 USB OTG 1 USB HOST standard A port	Interface 232 TTL WIFI RJ45 USB
Language	OSD language	Support multi language	Support multi language
Installation	Installation method	Installation of wall mounting bracket, bracket of gate and fixed tripod	Installation of wall mounting bracket, bracket of gate and fixed tripod
System	Operating System	Android 5.1	Android 5.1.1 or above
Detection	Call the police	Over-temperature alarm Support	Over-temperature alarm Support
	Measurement range	10℃~42℃	10℃~42℃
	Measurement Accuracy	±0.2℃	±0.2℃ ~ ±0.5℃
	Measurement mode	Thermographic temperature measurement	Thermographic temperature measurement
Network Module	Internet	Support Cable, WIFI	LTE Function Support 4G full Netcom Internet access function
Standby ads	Ads	Not Support	Stand By

Outdoor Digital Signage

Panel	Display size	55 inch	65 inch	75 inch	86 inch	
	Resolution	1920x1080/3840x2160	3840x2160	3840x2160	3840x2160	
	Enclosure	Iron				
	Display Area(Mm)	1210×680	1428×803	1650.4x928.26	1895×1065	
	Aspect Ratio	9:16				
	Brightness(Cd/m ²)	2,000/2500/3000				
	Color	1.06 Billion	1.073G			
	Viewing Angle	178°				
	Contrast Ratio	4000:1				
AV inputs	Output	HDMI, LVDS				
Power	Power Consumption(W)	≤ 800	≤ 1000			
	Input Voltage	AC110~240V (50Hz~60Hz)				
Mechanical	Net Weight(Kg)	200	250	280	320	
Environm-ental	Operating Temperature	-20° ~ 60°				
	Operating Humidity	10% - 80%				
	Storage Temperature	-30° ~ 60°				
	Storage Humidity	5% - 90%				
Feature	Enclosure Protection		IP55/IP65			
	internal media player	Media Formats	Video (MPG, AVI, MP4, RM, RMVB, TS), Audio (MP3, WMA), Image (JPG, GIF, BMP, PNG)			
		Media Resolution	1080x1920			
		CPU	A83T/RK3288			
		GPU	N/A			
		RAM	2GB DDR3			
		ROM	8GB NAND			
		USB	USB2.0 HOST (x2)			
		L	10/100M/1000M Ethernet (Network version screen only)			
		Wi-Fi	802.11b/g/n (Network version screen only)			
OS		Android 7.1				
Graphic Engine	N/A					
Accessories	Special	Images, Videos, Audio, Scrolling Text Message, On/Off Timer, On Screen Clock, Media Rotation				
	Included	AC Power Cable, Remote Control				
	Optional	Touch Screen Network Camera, Windows 4G				

Digital Signage Series

Panel	Display Size	43 inch	49 inch	55 inch	65 inch	75 inch	86 inch
	Resolution	1920x1080	1920x1080	1920x1080	3840x2160	3840x2160	3840x2160
	Display Area (mm)	943x531	1050x600	1210x680	1428x803	1650x928	1895x1065
	Aspect Ratio	16:9					
	Brightness (cd/m ²)	400					
	Colour	16.7M					
	Viewing Angle	178°					
	Contrast Ratio	4000:1					
	Audio	Speaker Type	10W, 8Ω (×2)				
AV inputs	Video	HDMI, VGA					
	Audio	Audio Socket (3.5mm)					
Power	Power Consumption (W)	≤100	≤130	≤150	≤160	≤160	≤180
	Input Voltage	AC110~240V (50Hz~60Hz)					
Mechanical	Net Weight (kg)	49	55	63.5	135	165	220
	Gross Weight (kg)	59	65	75	150	180	240
Environm-ental	Operating Temperature	-10° ~ 50°					
	Storage Temperature	30° ~ 60°					
	Humidity	10% to 80%					
	Humidity	5% to 95%					
Feature	Internal Media Player	Media Formats	Video (MPG, AVI, MP4, RM, RMVB, TS), Audio (MP3, WMA), Image (JPG, GIF, BMP, PNG)				
		Media Resolu	1080x1920				
		CPU	RK3288 RK3399				
		GPU	N/A				
		RAM	2GB DDR3				
		ROM	8GB NAND				
		USB	USB2.0 HOST (x2)				
		LAN	10/100M Ethernet (Network version screen only)				
		WI-FI	802.11b/g/n (Network version screen only)				
		OS	Android 4.4/5.1/7.1				
Graphic Engine	N/A						
Accessories	Included	Scheduling Software, Remote Control, Key, User Manual					
	Optional	Network Upgrade, Touch Screen Upgrade					

32 inch Touch Screen Kiosk

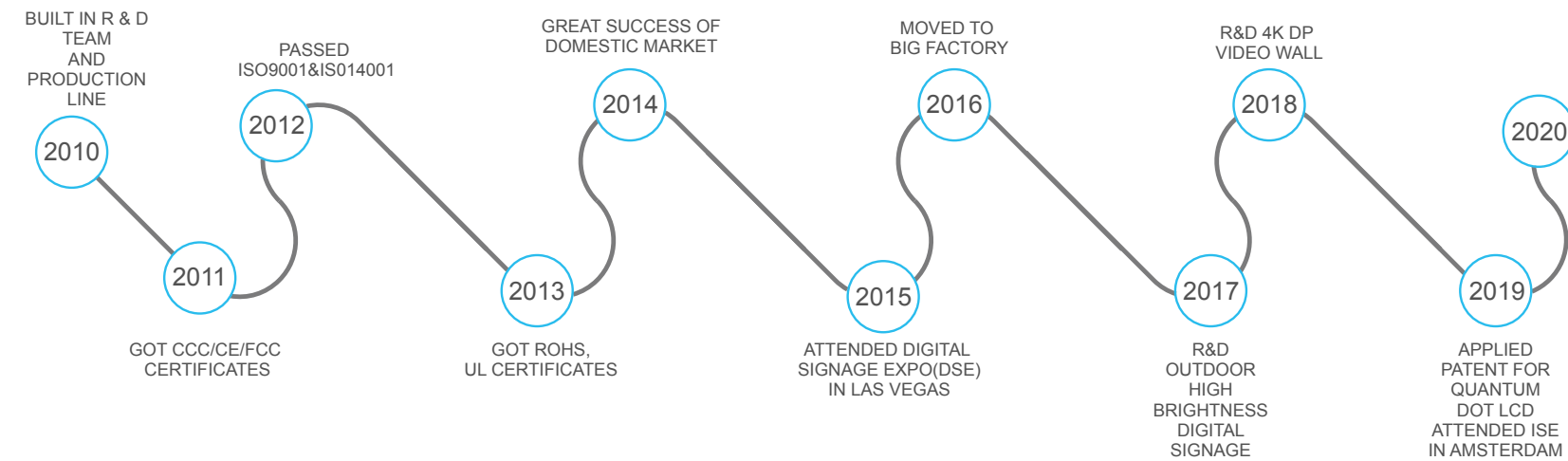
Panel	Display Size	32 inch
	Resolution	1920*1080
	Response Time	8ms
	Active Area(H*w Mm)	697*392
	Aspect Ratio	9:16
	Brightness(Cd/m ²)	300
	Color	16.7M
	Color Temperature	10000K
	Viewing Angle	178°
	Contrast Ratio	2000: 1
	Backlight Life	50000 hours
AV inputs/ outputs	Video	HDMI,DVI,VGA,RGB/HV(BNC),Video1 IN(BNC),Video2 IN(BNC),Video1 OUT(BNC)
	Audio	audio in,audio out
Power	Power Consumption(W)	100
	Input Voltage	100V~240V(50-60HZ)
	Power Management	VESA DPMS
Mechanical	Net Weight(Kg)	35
	Gross Weight(Kg)	50
Environm-ental	Working Temperature	-10° -50°
	Operting Humidity	10-90%
	Working Pressure	800-1114 hPa(altitude:0-4,000m)
Acce-ssories	Included	remote control,AC power cable,user manual,VGA/HDMI cable,OSD control box

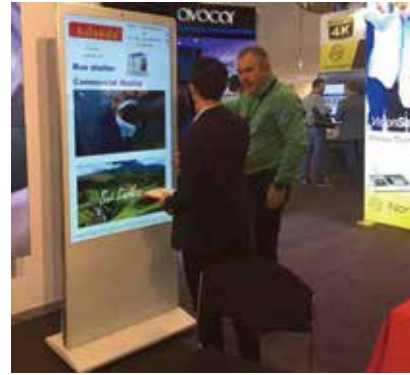
Asianda Profile

Shenzhen Yaxunda LCD Display Equipment Co., Ltd.

Was Established In 2001 By A Group Of Entrepreneurs Who Were Running Successful Flat TV Business In China. Led By The Chief Founder Mr. Daniel Ouyangwho Saw A Great Opportunities In The Growing Digital Signage Sector And Set Up One Of The First Commercial LCD Factories , The Company Had Grown Into A Leading Firm With Over 30 Million US Dollar Annual Sales. The Company Has Become A One-Stop Shop For All Kinds Of Professional LCD Display Products In Virtually Any Size Below 120 Inches, Such As Indoor And Outdoor LCD Advertising Display, 4K LCD Video Walls, Touch Interactive Kiosks, Digital Signage, Good At Large LCD Screen Project, And Commercial Lcd Advertising Display.

After More Than 15 Years Development, We Are Proud To Be One Of The Top 5 Suppliers In Asia. Our Products Are Equipped With High Profile Components From Chimei, AUO, Samsung, LG And Sharp, To Whom We Have Set Up Good Business Relations And The CEOs And VPs Of These Panel Suppliers Visited Us In China Frequently. And Our Design Engineers And Quality Assurance Teams Work Closely Together To Make Sure All Products Are Compliant With , CE, FCC, UL And RoHS Standards. Due To Us Conforming To The International Standards, Exporting Business Accounts For About 65 Percent Of The Total Revenue.





New Cases Around The World

